

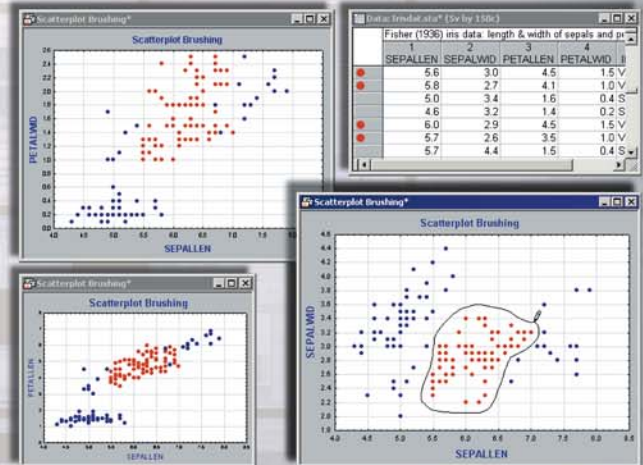
New features in

STATISTICA™

Version 7

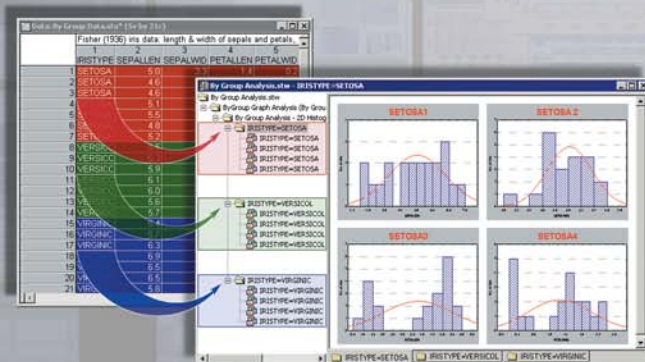
Working with Projects: Dynamically, Interactively Select and Query Data Directly from Graphs

- Instantly update all graphs when the underlying data set changes.
- Construct alternate, dynamic views of your data with large numbers of dynamically linked STATISTICA graphs.
- Use the new graph brushing tools to interact with the data by leveraging STATISTICA graphics as “visual subset selection and querying tools.”
- Define your own metadata containing additional properties of individual variables; for analyses (e.g., to pre-select and populate variables list with “only appropriate” variables) and graphs (e.g., to pre-select default scaling for variables in scatterplots or histograms).
- Define your own metadata containing additional properties of individual cases in a data set (e.g., a particular subset of cases can be assigned a “red star” marker, and will appear as such in all graphs; other cases can be assigned an “always labeled” status and will be identified with their names in all graphs).



Expanded Spreadsheet Formulas and Case Selection Conditions

- Automatically display text of current case selection conditions in the title areas of all respective output spreadsheets and graphs.
- Conveniently run text searching, matching, and replacement functions for case selection conditions and spreadsheet formulas using a significantly expanded syntax.



The “By Group” Analysis

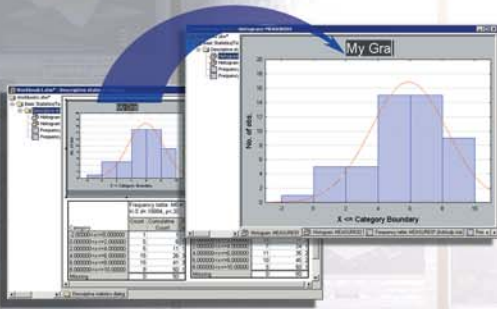
- Use powerful, automatic “By Group” Analysis where complete analyses, whether Statistics or Graphs, are repeatedly executed for each combination of levels of a set of “By Group” variables. For example, selecting variables CITY and GENDER as “By Group” variables for a particular analysis will instruct STATISTICA to repeat this analysis for all subsets of cases that can be created by combinations of levels of CITY and GENDER (e.g., Dallas/Men, Dallas/Women, Chicago/Men, Chicago/Women, ...).

Enhanced Data Import Options

- Conveniently import or export SAS (both binary and portable formats), and native (binary) JMP, Minitab, and SPSS files, providing easy migration from these legacy systems.

More Results Output Options

- Enjoy the wide selection of new workbook features in *STATISTICA 7*.
- Use the power of the new workbook multi-item display function.



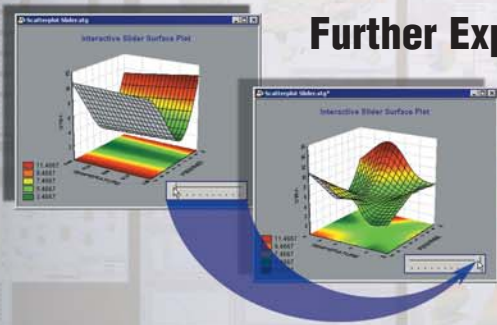
Export PDF Format

- Export all document types into full-featured (editable) PDF format.



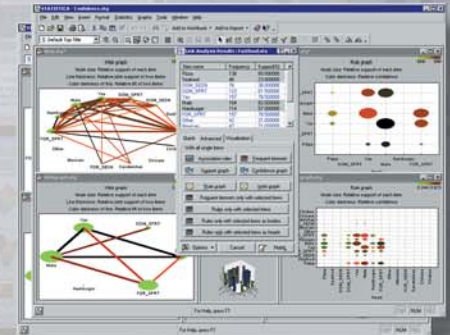
Further Expanded *STATISTICA* Visual Basic Functionality

- Go even further using *STATISTICA* as a comprehensive and efficient programming platform for developing highly interactive custom graphics applications.
- Embed a wide variety of ActiveX controls within *STATISTICA* graphs.



New Data Analysis Modules

- **NIPALS** - an enhanced implementation of a number of techniques known as Principal Component Analysis (PCA) and Partial Least Squares (PLS). In this new module, PCA and PLS are implemented using the state-of-the-art NIPALS algorithm (Nonlinear Iterative Partial Least Squares), a state-of-the-art procedure designed to extract systematic variations, relationships, and information in highly multivariate datasets.
- **Link Analysis** - a new, stand-alone product for sequence analysis, advanced association rules analysis, mixed sequence and association rules analysis, post-analysis clustering of similar items, deployment of solutions, and querying of rules.
- **Random Forests** - a new, powerful module in *STATISTICA Data Miner* (as well as *STATISTICA Text Miner* and *STATISTICA QC Miner*) for building flexible models for classification and regression; particularly well suited for extremely large numbers of predictor variables.



And Many, Many More New Features and Options...

STATISTICA Products

The *STATISTICA* family provides the most comprehensive array of data analysis, data/document management, quality/process control, data visualization, reporting, and predictive data mining procedures:

Enterprise Solutions - *STATISTICA* products designed for use by multiple users across a site or an entire organization, including the use of distributed *STATISTICA* applications through thin client (Web browser) architectures access across a Wide Area Network.

Web-based Analytic Applications - *STATISTICA* products deployed in a highly-scalable, Web-based distributed processing architecture for customized, turnkey Web-based analytic applications.

Data Mining Solutions - *STATISTICA*'s suite of advanced predictive modeling and knowledge discovery algorithms, offering the most comprehensive selection of techniques in one software solution - from querying databases and deploying models to generating final reports.

Desktop Solutions - *STATISTICA* products designed for deployment on individual workstations.



StatSoft®

2300 E. 14th St. • Tulsa, OK 74104 • USA • (918) 749-1119 • Fax: (918) 749-2217 • info@statsoft.com • www.statsoft.com

Australia: StatSoft Pacific Pty Ltd.
Brazil: StatSoft South America
Czech Republic: StatSoft Czech Rep. s.r.o.
France: StatSoft France

Germany: StatSoft GmbH
Hungary: StatSoft Hungary Ltd.
Israel: StatSoft Israel Ltd.
Italy: StatSoft Italia srl

Japan: StatSoft Japan Inc.
Korea: StatSoft Korea
Netherlands: StatSoft Benelux BV
Poland: StatSoft Polska Sp. z o. o.

Portugal: StatSoft Iberica Ltda.
Russia: StatSoft Russia
Singapore: StatSoft Singapore
S. Africa: StatSoft S. Africa (Pty) Ltd.

Spain: StatSoft Espana
Sweden: StatSoft Scandinavia AB
Taiwan: StatSoft Taiwan
UK: StatSoft Ltd.